

## **BUNGE MEAL AND STORAGE**

**2nd St. North West, Altona, Manitoba  
July 17 2014**

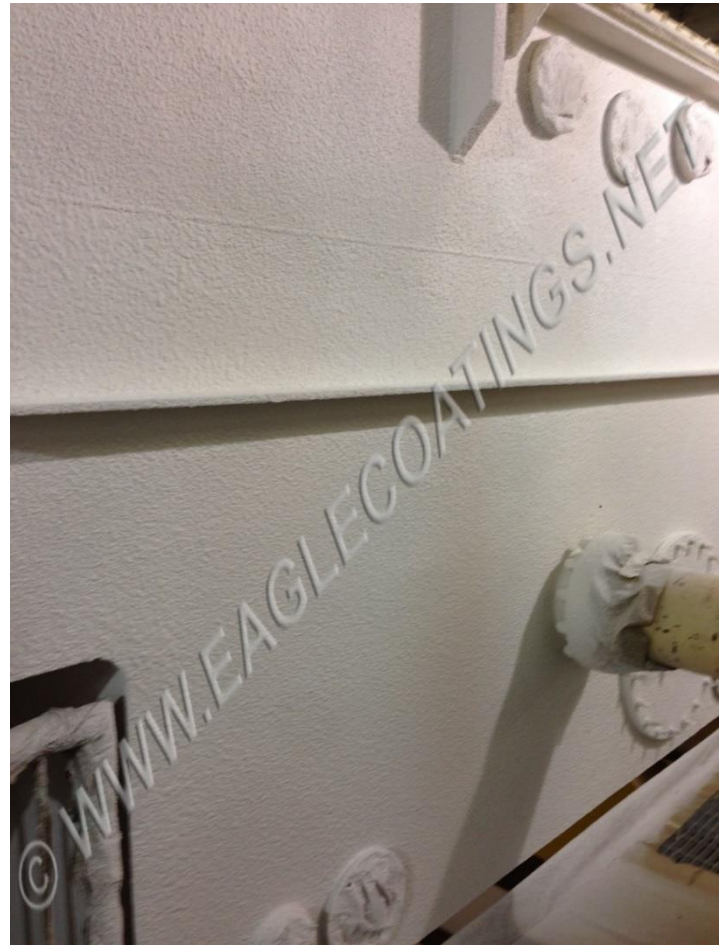
The Problem: Insulate canola extractor and assist in regulating plant environment. Bunge Meal and Storage required an approximate 10,000 sq foot canola extractor to be insulated with **HSC® Coating** to a thickness of **100 mils [2.54 millimetres, 1/10th inch] DFT** to bring temperatures from **150°F** down to **100°F**.

After **HSC® Coating** was applied, a top coat of **SUPERTHERM®** was applied at a thickness of **9.8 mils DFT [0.25 millimetres, 0.0098 inches]** to protect from water washing during maintenance of the extractor.

**Canola extractor prep before **HSC®** application**



**HSC ® applied to 112 mils DFTTop coat of SUPERTHERM ®  
(applied at 9.8 mils DFT)**







Project Pictures courtesy of:

