

RAILROAD OVERPASS

KENTUCKY 1996 - 2004

RUST GRIP® and ENAMO GRIP®

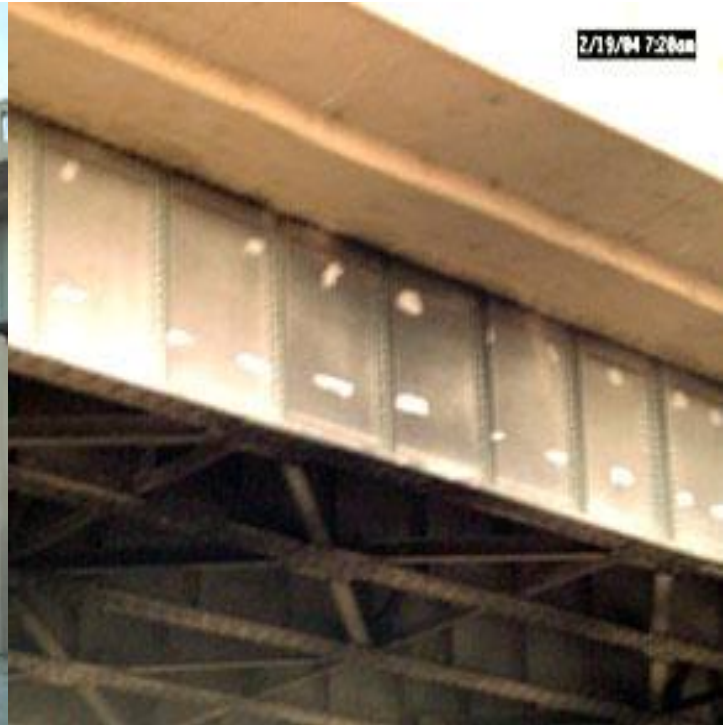
These recent photos are courtesy of Mr. Ted Hopwood at the University of Kentucky.

Problem: Trains operating under the bridge leave severe diesel soot and carbon deposits behind, resulting in a corroding bridge structure.

Solution: Two coats of RUST GRIP® applied by brush at 200 sq. ft.(18 sq. meters) per gallon, and one coat of ENAMO GRIP® sprayed on using an airless sprayer at 250 sq. ft.(22 sq. meters) per gallon



After 8+ years of protection from **RUST GRIP**® and **ENAMO GRIP**®, Mr. Ted Hopwood at the University of Kentucky, which does research for the Kentucky Dept. of Transportation, reported the coating was still doing an outstanding job and looked very good.



The small bright spots on the surface of the **ENAMO GRIP**® was where a pipe was removed and the anchor holes were patched.

