

PEDESTRIAN BRIDGE RUST & LEAD-BASED PAINT ENCAPSULATION

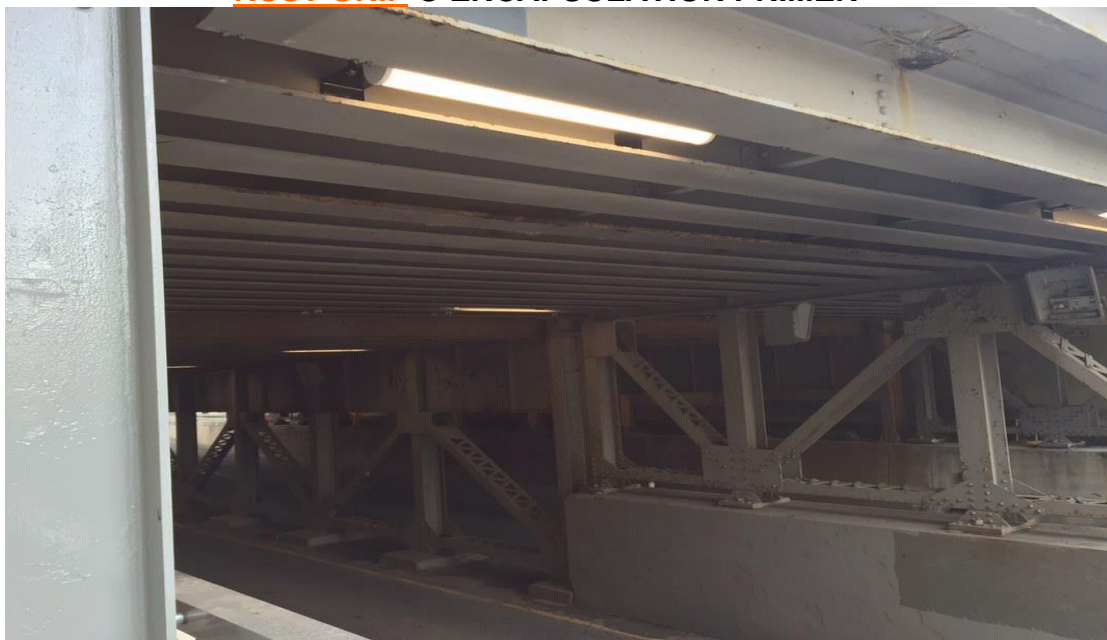
Calgary September 2015

RUST GRIP® and **ENAMOG RIP**®

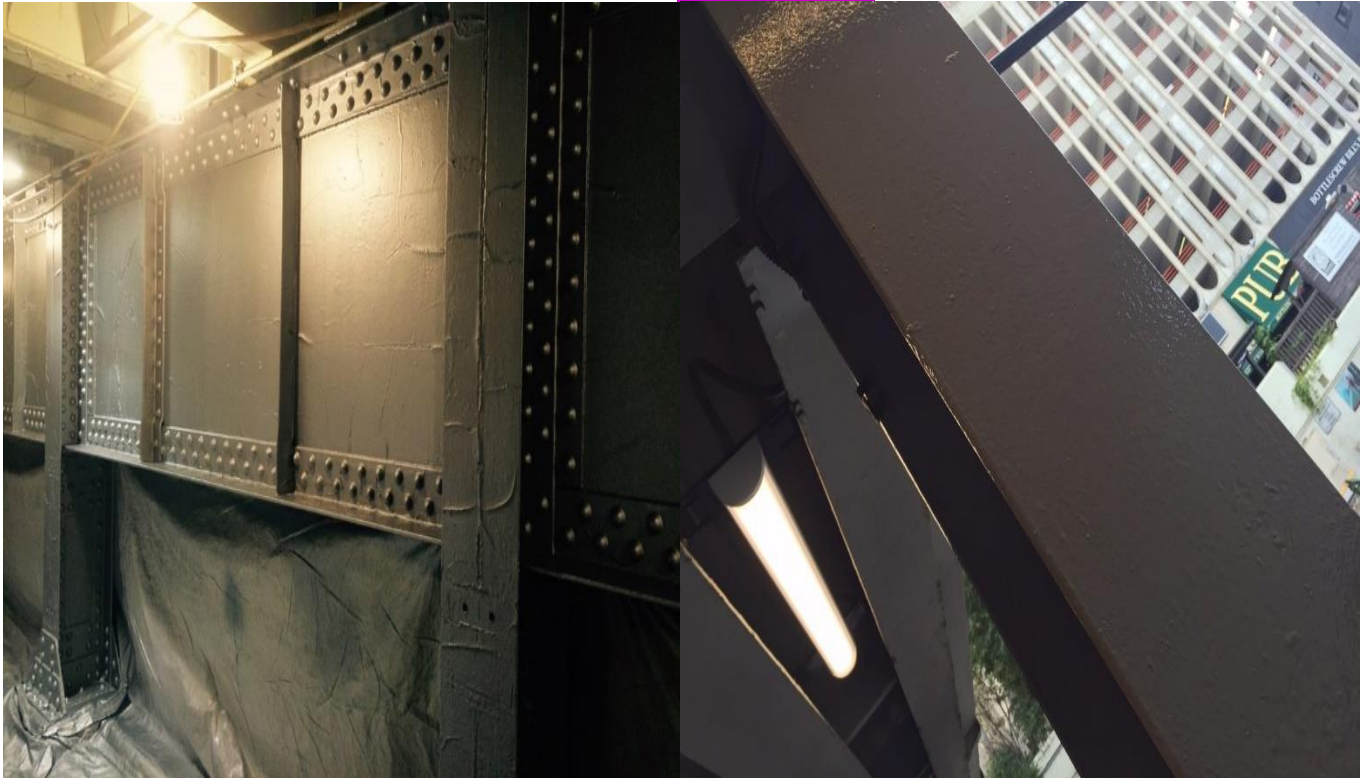
BEFORE APPLICATION



RUST GRIP® ENCAPSULATION PRIMER



AFTER APPLICATION OF ENAMOGRIP® TOP COAT





Project Details: City of Calgary - CP Rail Steel Bridge / Overpass encapsulation of lead-based paint and rust.

Project Pictures Courtesy Certified Contractor: [Calibre Coatings](#)

If **corrosion or **lead-based paint** is a problem on any structure or equipment . . .**

WE OFFER AN ...

